

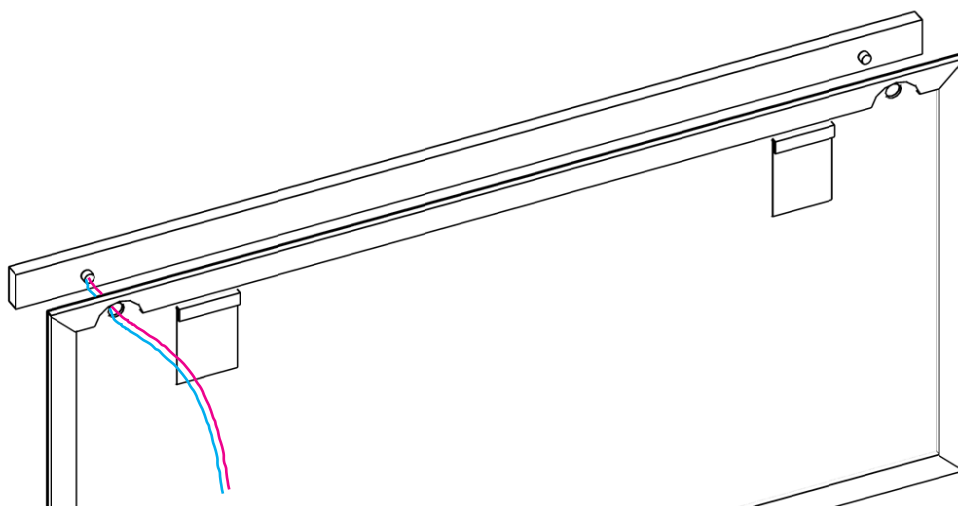
NEUTRO + LUCENTE

design AL Studio



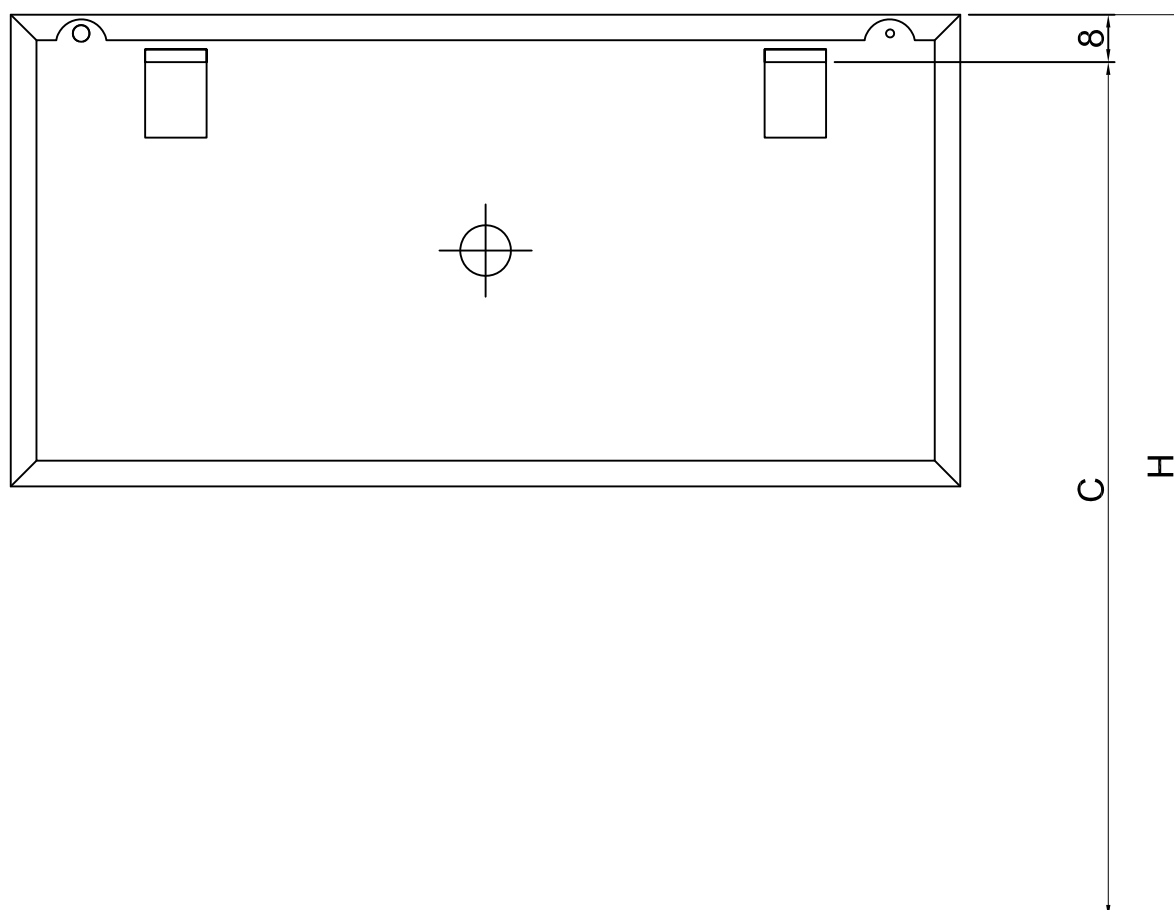
antoniolupi

MADE IN ITALY

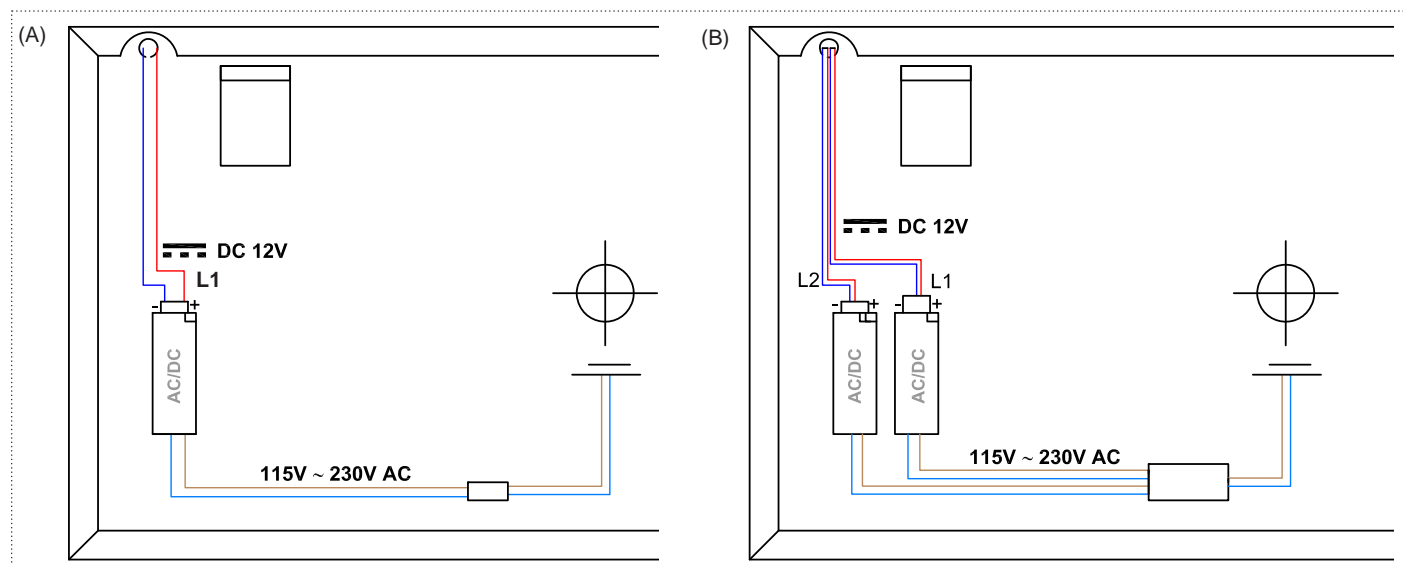


Fix the lamp in the mirror in the appropriate holes.

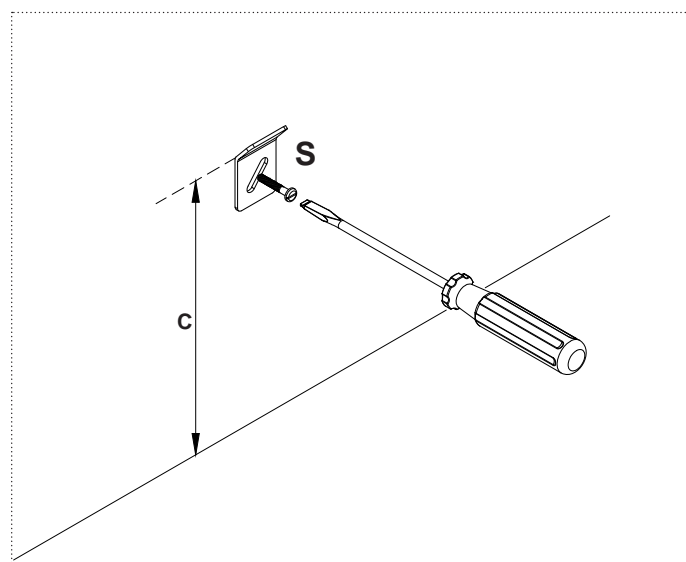
P.S.: Remove the corner protection only when installation is completed. We advise to make sure the lighting wires are prepared so they are in correspondence to the center of the mirror.



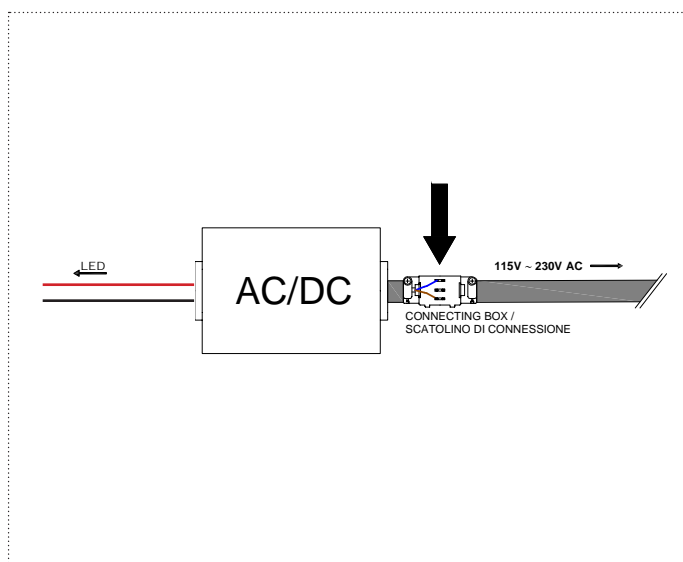
1_ To attach the mirror to the desired height H. Mark the position of the fixing holes of the brackets S, in such a way that the fold of such is located at the height C



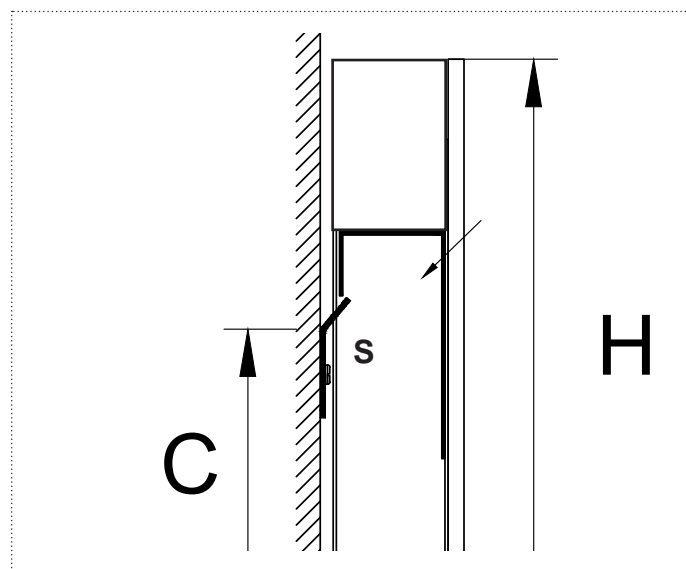
2_ Connect the lamps according to the above schemes. (A) version with one transformers and (B) version with two transformers. Fix the transformer L1(A) or L1 and L2(B) on the back of the mirror using the double sided tape provided.



3_ Fix the bracket S at the determined height, put the second bracket in level with the first and fasten it to the wall.



4_ Make the electrical connection between the network and the AC adapter / DC, using the small box of the supplied connection as indicated.



5_ Hang the mirror



6_ Top view LUCENTE



7_ Bottom view LUCENTE

[illegible]

READ CAREFULLY THE INSTRUCTIONS GIVEN IN THE FOLLOWING MANUAL

Keep rigorously to the indications given in the manual for proper maintenance of the product.

POSITIONING

For internal use only.

The position of the mirror must not be less than 0.6m from the shower enclosure or bathtub.

To hang the mirror do not use other supports than those supplied.

Do not install the mirror near heated sources like radiators, heaters or other similar sources.

INSTALLATION

To connect the electrical parts, the support of qualified personnel with electrotechnical experience is required.

When installing the mirror you must use adequate tools.

During installation it is necessary to pay close attention to the risk of electrical shock.

We recommend the installation of a bipolar switch to allow the electrical sectioning of the circuit.

Make the electrical connections as per the descriptive diagram in the present manual.

USE

The mirror must be used only if complete with all its elements.

Do not modify or alter the original conditions of the mirror. Any tampering can compromise its safety.

Do not use the mirror for other purposes than what it is intended for.

MAINTENANCE

For every sign of wear or malfunctioning call immediately the company Antonio Lupi Design S.p.A.

All components of the sink must be promptly replaced in the event of damage.

The light source contained in this product must be replaced only by the manufacturer or by equally qualified personnel.

REMOVAL AND DISPOSAL

During the removal of the product, all necessary precautions must be taken to avoid the risk of electric shock.

The removed product must then be disposed of according to all legal requirements as special waste.



EN_ This product contains a light source with energy efficiency class < F >

antoniolupi

73

VIA MAZZINI
75

Antonio Lupi Design S.p.A.
via Mazzini 73/75 - 50050 Stabbia
Cerreto Guidi (Firenze) - Italy
T +39 0571 586881_95651
F +39 0571 586885
www.antoniolupi.it
lupi@antoniolupi.it